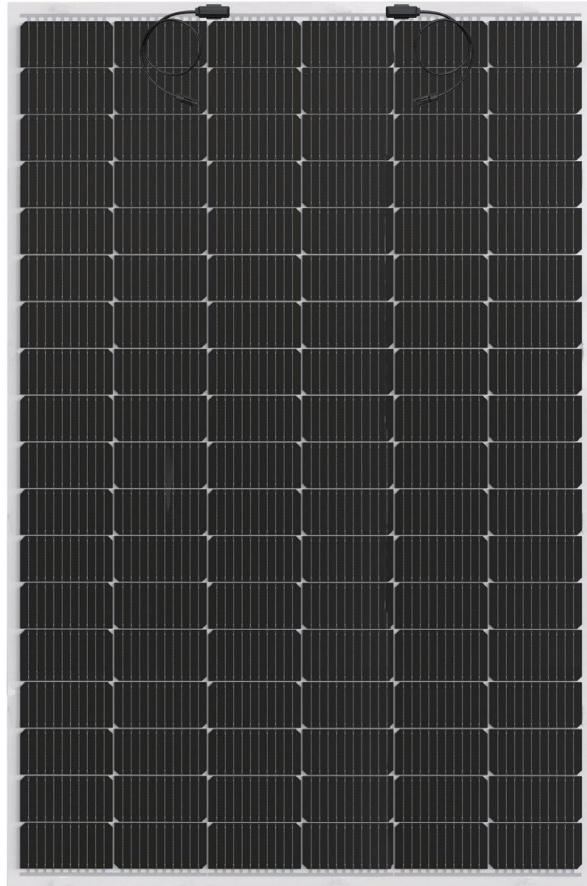


**AppliedPV Co. , Ltd.**

# **Light Glass Solar Panel**

[ Solar rooftop with asphalt tile ]



Similar as the way the asphalt tile installed.



Mount the flexible panel on rooftop with binding glue



1. Sweep the base



2. Mount the panel with glue

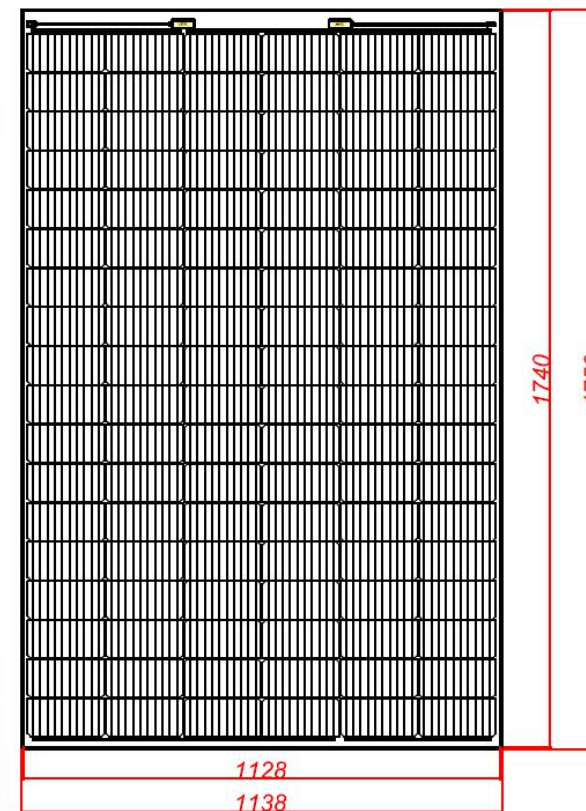


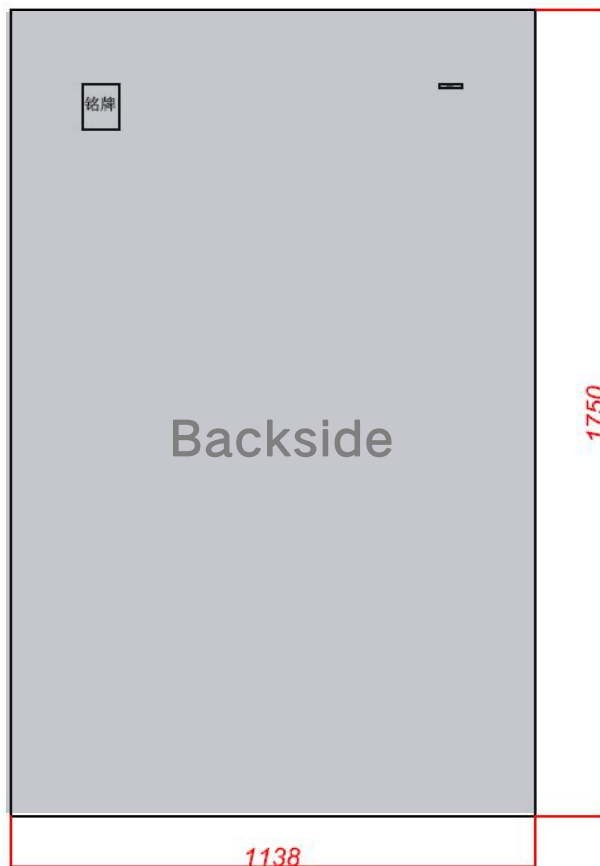
3. Fix the panel with tile nail



4. Connect and cover the electrical wires. Complete

SPEC	
STC	AP-410-G8PC
Maximum Power ( $P_{max}$ )	410W
Maximum Power Voltage( $V_{mp}$ )	30.9V
Maximum Power Current( $I_{mp}$ )	13.29A
Open-circuit Voltage( $V_{oc}$ )	37.3V
Short-circuit Current( $I_{sc}$ )	13.90A
Module Efficiency(%)	20.60%
Operating Temperature	-40°C to 85°C
Maximum System Voltage	1500VDC
Maximum Series Fuse Rating	20A
Application Class	Class A
Power Tolerance	0~+5W
STC:Irradiance 1000W/m <sup>2</sup> , module temperature 25°C , AM=1.5	





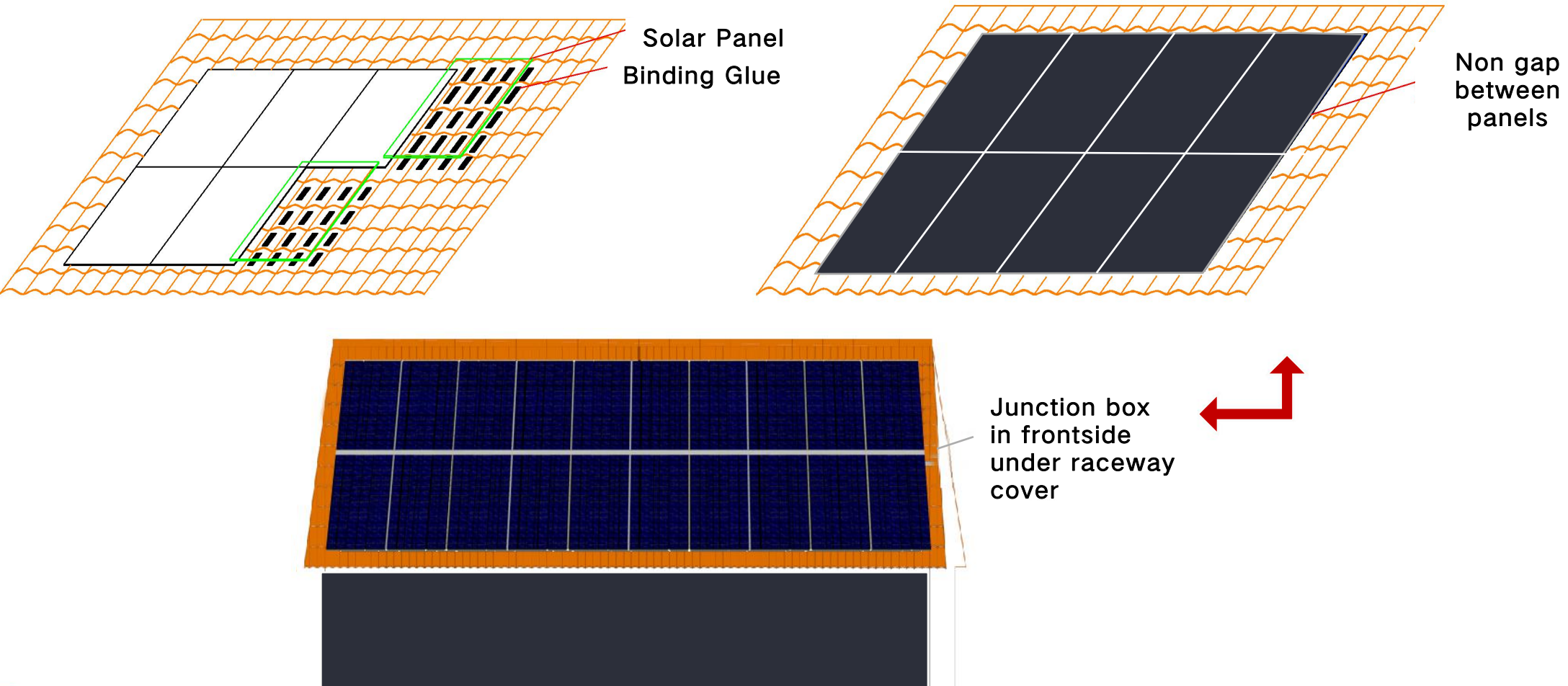
## SPEC

Solar Cell	Monocrystalline silicon cell
Cell size	182×91mm
No. of cells	108
Module Dimensions	L:1750*W:1138*H:18 mm(Junction box15mm)
Weight	13.0 kg
Front Glass	1.6 mm tempered AR Glass
Backsheet	White PV Backsheet
Frame	None
J-Box	IP 67
Output cables	4mm <sup>2</sup>
Cable length	(+)/(-) 500 mm
Connector	MC4 compatible

## Temp Coefficient

NOCT(Nominal Operating Cell Temperature)	45 ± 2°C
Temperature Coefficient of Pmax	-0.35%/°C
Temperature Coefficient of Voc	-0.27%/°C
Temperature Coefficient of Isc	0.050%/°C





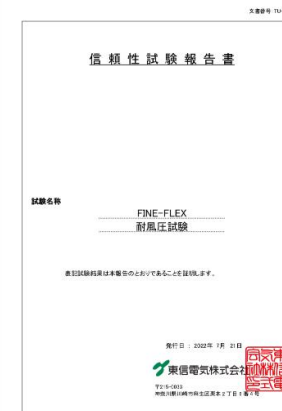
	Weight	Installation	Priority
Flexible Panel	3.2 Kg/m <sup>2</sup>	Mount on rooftop. Fixed with tile nail. Without bracket	No any destroy on rooftop
			Without gap between panels, protect the rooftop
			1820pcs per container. Lower shipping cost.
			1/2 weight of normal panels. Save more energy and carbon reduction during shipping
			Without frame. Low carbon product.
			Without frame. Save 1/2 installation cost.

Double the number with same weight.

*Carbon reduction 50% & Cost saving 50% during shipping*

6g/w carbin reduction on material

		Curing Time	Peeling Force (N/cm)	Even force (N/cm)
1	3M+PVC	7days	16.48	17.39
2	3M+PVC	7days	20.45	
3	3M+PVC	7days	15.74	
4	Tonsan1527+PVC	7days	14.96	20.04
5	Tonsan1527+PVC	7days	19.61	
6	Tonsan1527+PVC	7days	25.55	
7	Henkel939+PVC	7days	55.75	63.28
8	Henkel939+PVC	7days	67.76	
9	Henkel939+PVC	7days	66.34	



**Passed wind tunnel test in Japan**

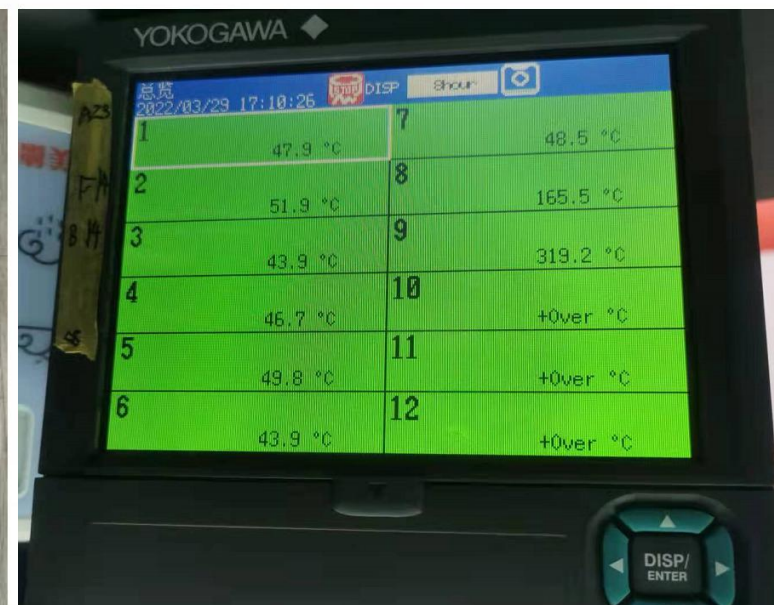
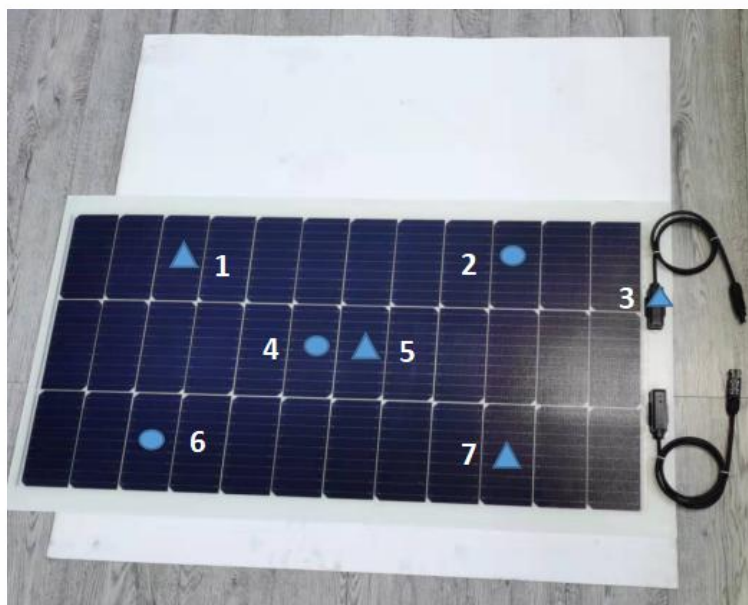


**Option with black and white**

Very thin frontside film → Easy to release heat in frontside

Strong backside support film → Prevent more heat to be released in backside

Fireproofing of the backside film material → More safety



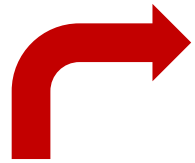
**Test 2hours in STD 1000W/m<sup>2</sup>**

**Thermocouple position**

- ▲ Frontside position
- Backside position

	Data1	Data2	Data3	Ave
Frontside	47.9°C	49.8°C	48.5°C	48.7°C
Backside	51.9°C	46.7°C	43.9°C	47.5°C





[www . AppliedPV . com](http://www.AppliedPV.com)